



La Forêt de Soignes

Une perle verte au coeur du reseau européen Natura 2000

Het Zoniënwoud

Een groene parel in het hart van het Europese netwerk Natura 2000

The Sonian Forest

A green pearl in the heart of the European network Natura 2000

Frank VASSEN, European Commission, DG ENV.D3, Nature Conservation Unit

What is Natura 2000?

EU-wide coherent network of protected sites established under EU Birds Directive (1979) and Habitats Directives (1992)

National/regional authorities must select the sites **on the basis of scientific criteria** (importance of areas for species and habitats of EU importance)

Each Natura 2000 site must be **protected against deterioration** (exceptions only possible if “overriding public interest”)



What is Natura 2000?

Natura 2000 approach is based on **conservation outcome** rather than on regulating activities

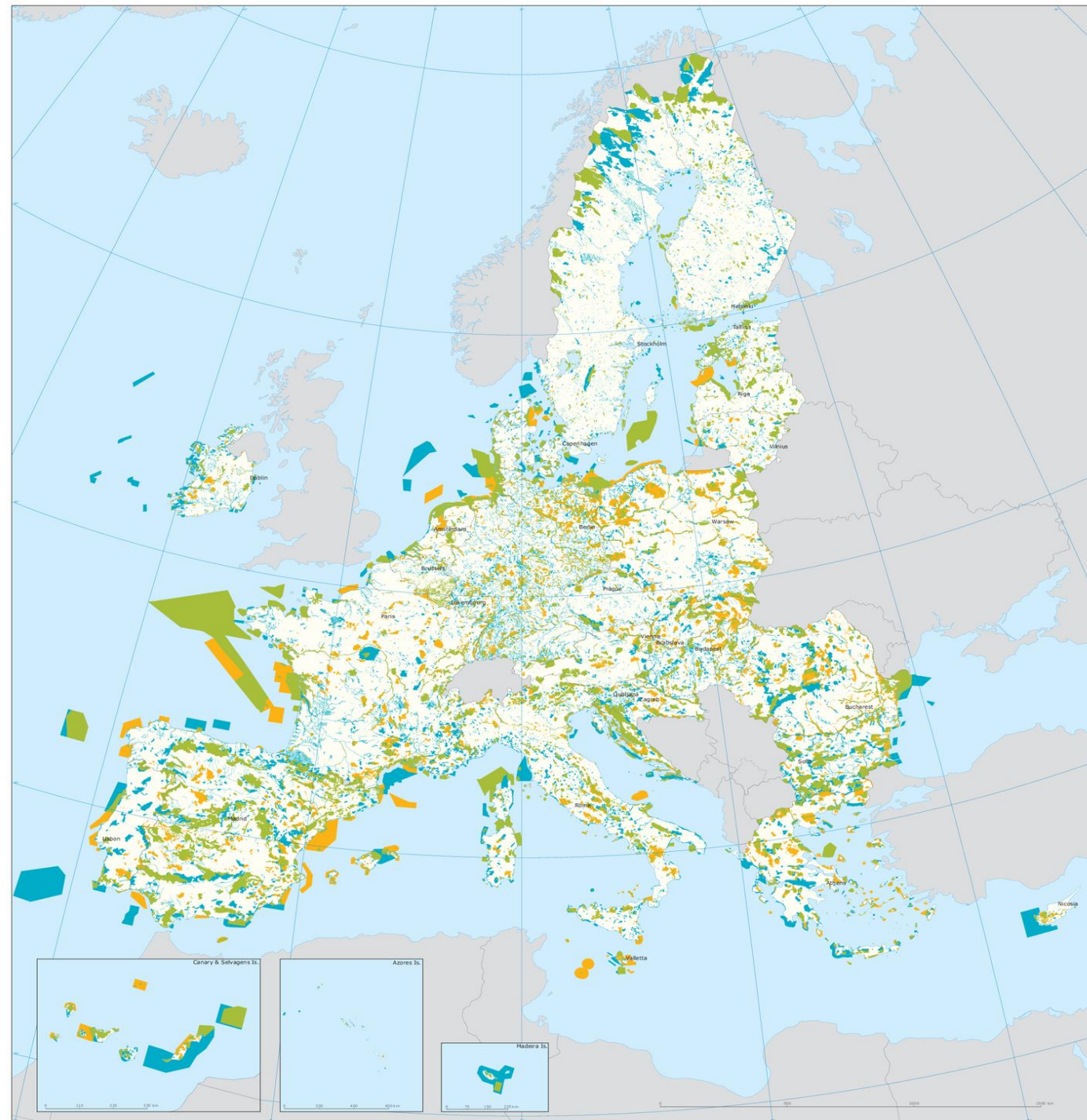
Competent national or regional authorities must establish site-species conservation objectives and measures to **maintain or restore “favourable conservation status”** of protected habitats and species

Achieving conservation outcomes requires **cooperation with landowners and -users**



Some figures....

- 27,000 sites in total
- 18,6% of the EU27 land area
(Denmark 8,3% ↔ Slovenia 37,9%)
- 450.000 km of marine areas
(ca. 9% of EU marine area)
- 231 habitat types
more than 1000 species



A black woodpecker is perched on a tree trunk, facing right. The tree trunk is light brown and textured. The background is a dense forest with many thin, bare branches and some green foliage. The lighting is soft, suggesting a forest setting.

Zoniënwoud /
Forêt de Soignes

[Open in side panel](#)
[Zoom to](#)

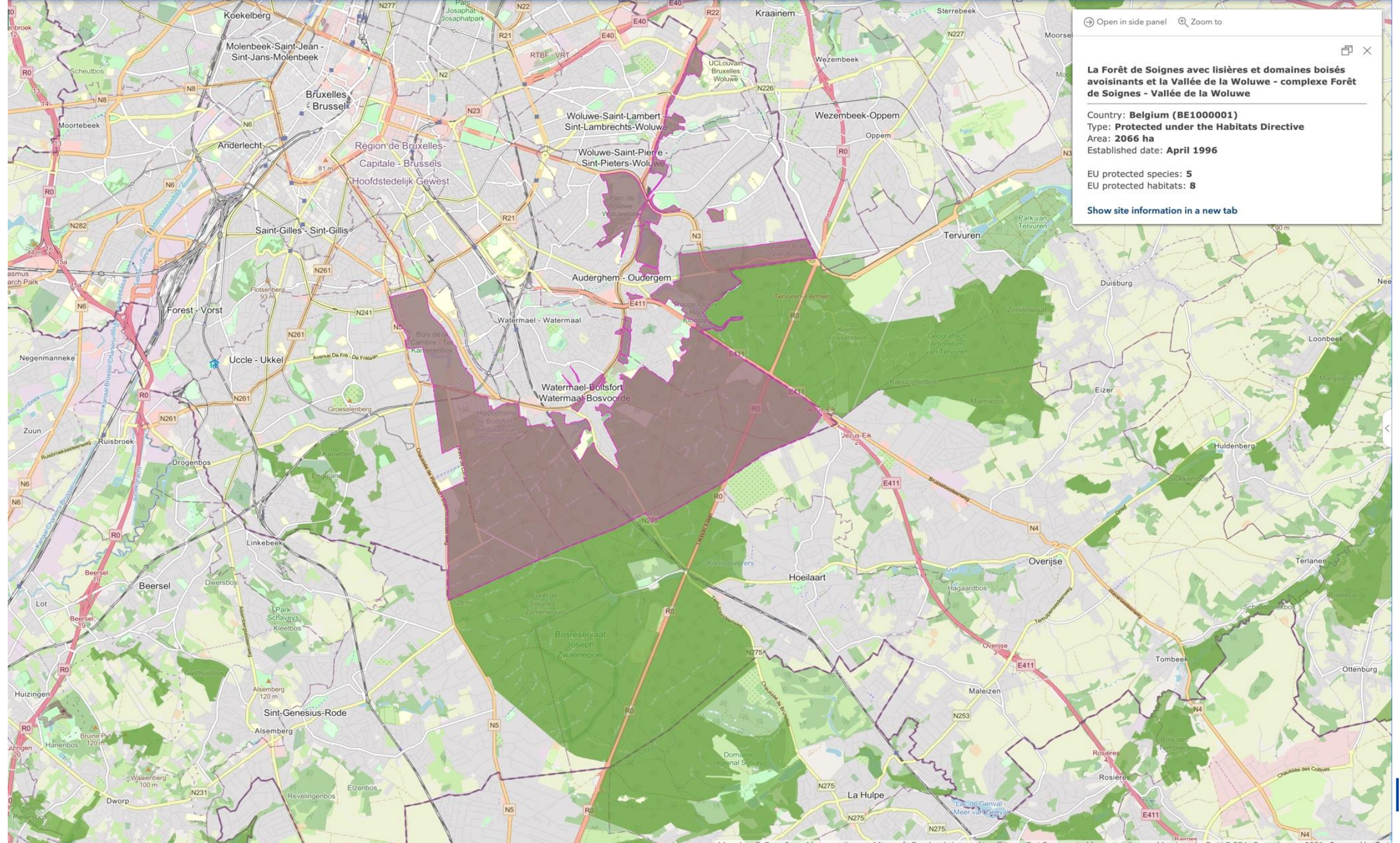


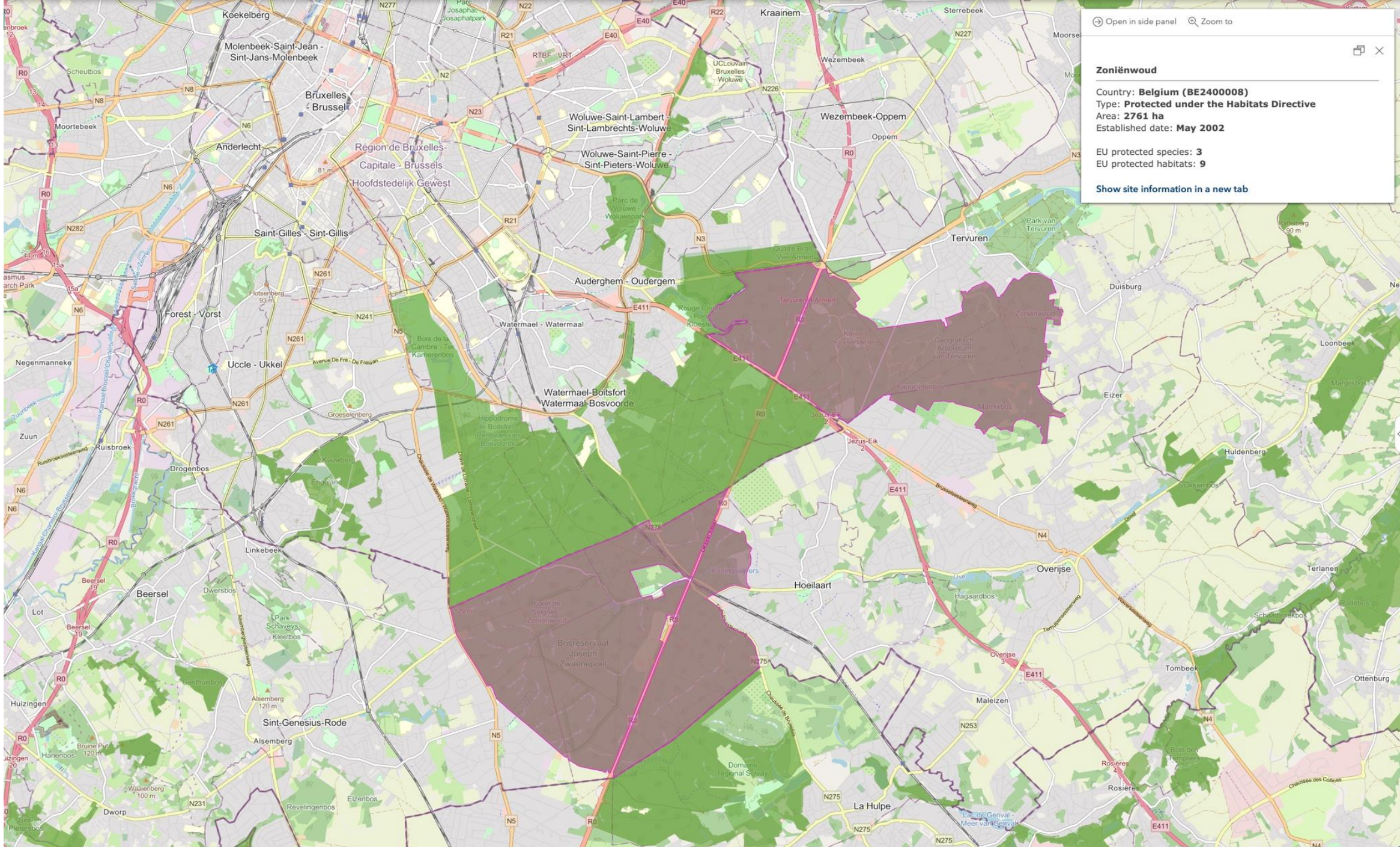
La Forêt de Soignes avec lisières et domaines boisés avoisinants et la Vallée de la Woluwe - complexe Forêt de Soignes - Vallée de la Woluwe

Country: **Belgium (BE1000001)**
 Type: **Protected under the Habitats Directive**
 Area: **2066 ha**
 Established date: **April 1996**

EU protected species: **5**
 EU protected habitats: **8**

[Show site information in a new tab](#)





Open in side panel Zoom to

Zoniënwoud

Country: **Belgium (BE2400008)**
Type: **Protected under the Habitats Directive**
Area: **2761 ha**
Established date: **May 2002**

EU protected species: **3**
EU protected habitats: **9**

[Show site information in a new tab](#)

[Open in side panel](#)
[Zoom to](#)

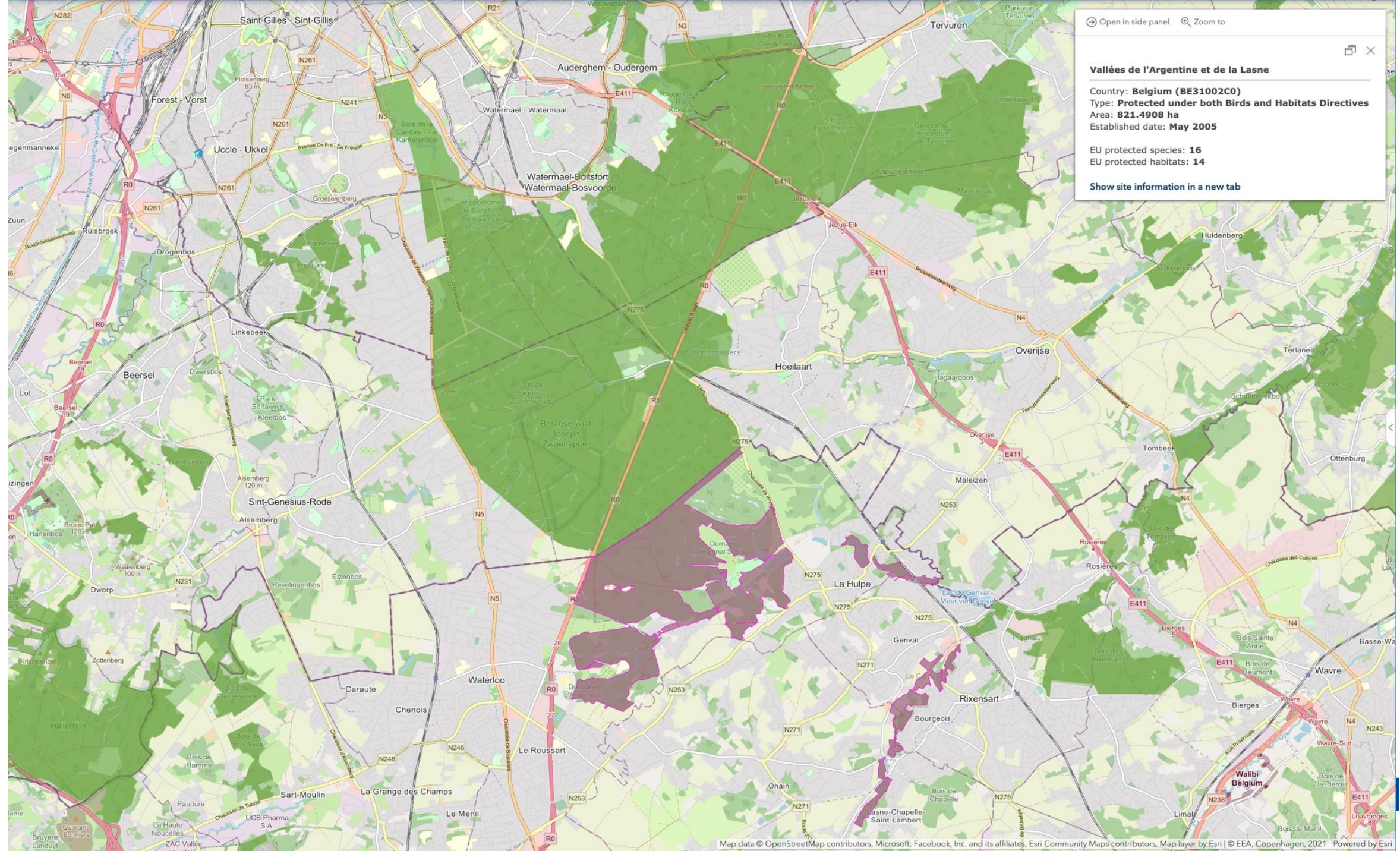
✕

Vallées de l'Argentine et de la Lasne

Country: **Belgium (BE31002C0)**
 Type: **Protected under both Birds and Habitats Directives**
 Area: **821.4908 ha**
 Established date: **May 2005**

EU protected species: **16**
 EU protected habitats: **14**

[Show site information in a new tab](#)

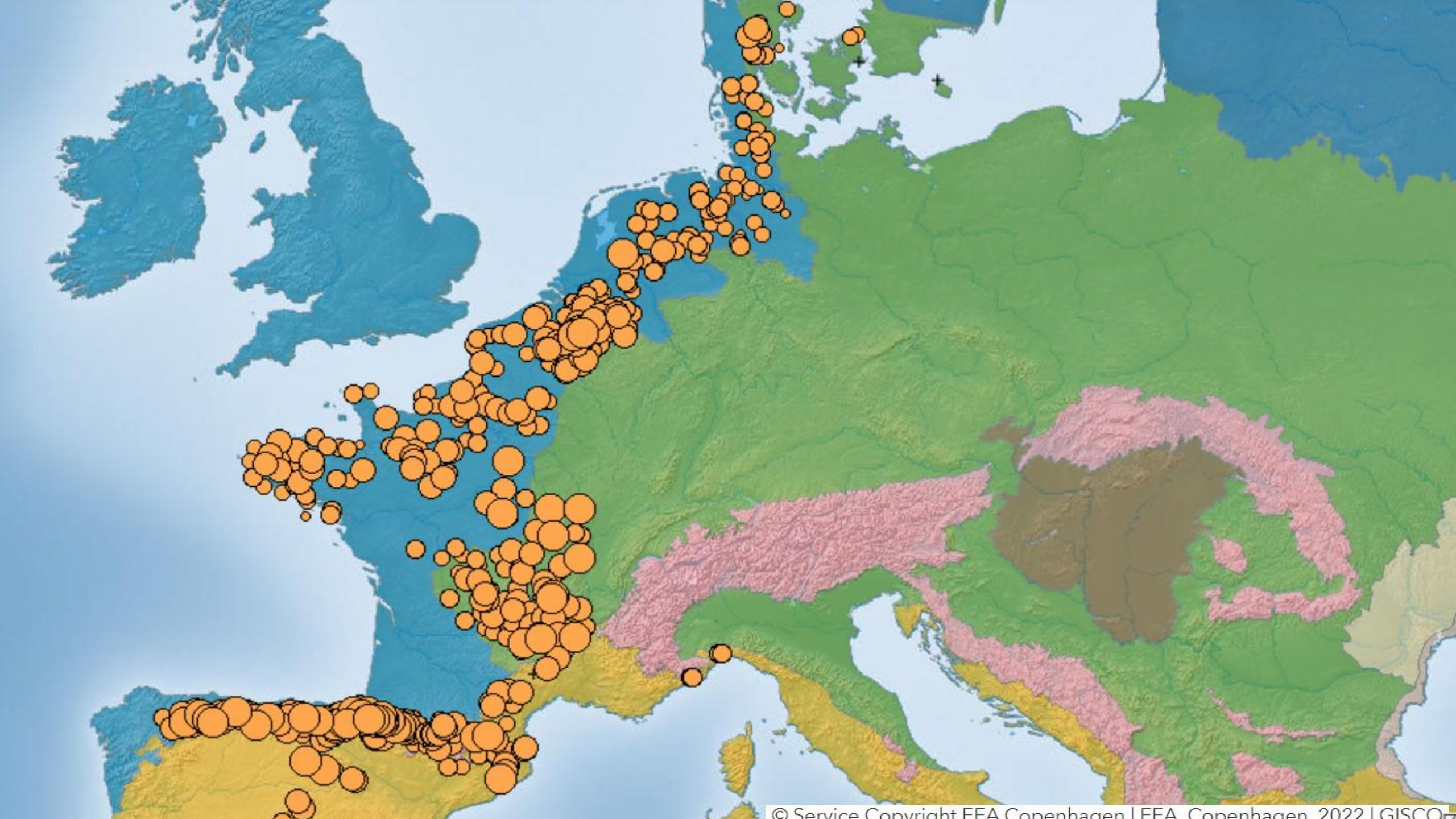




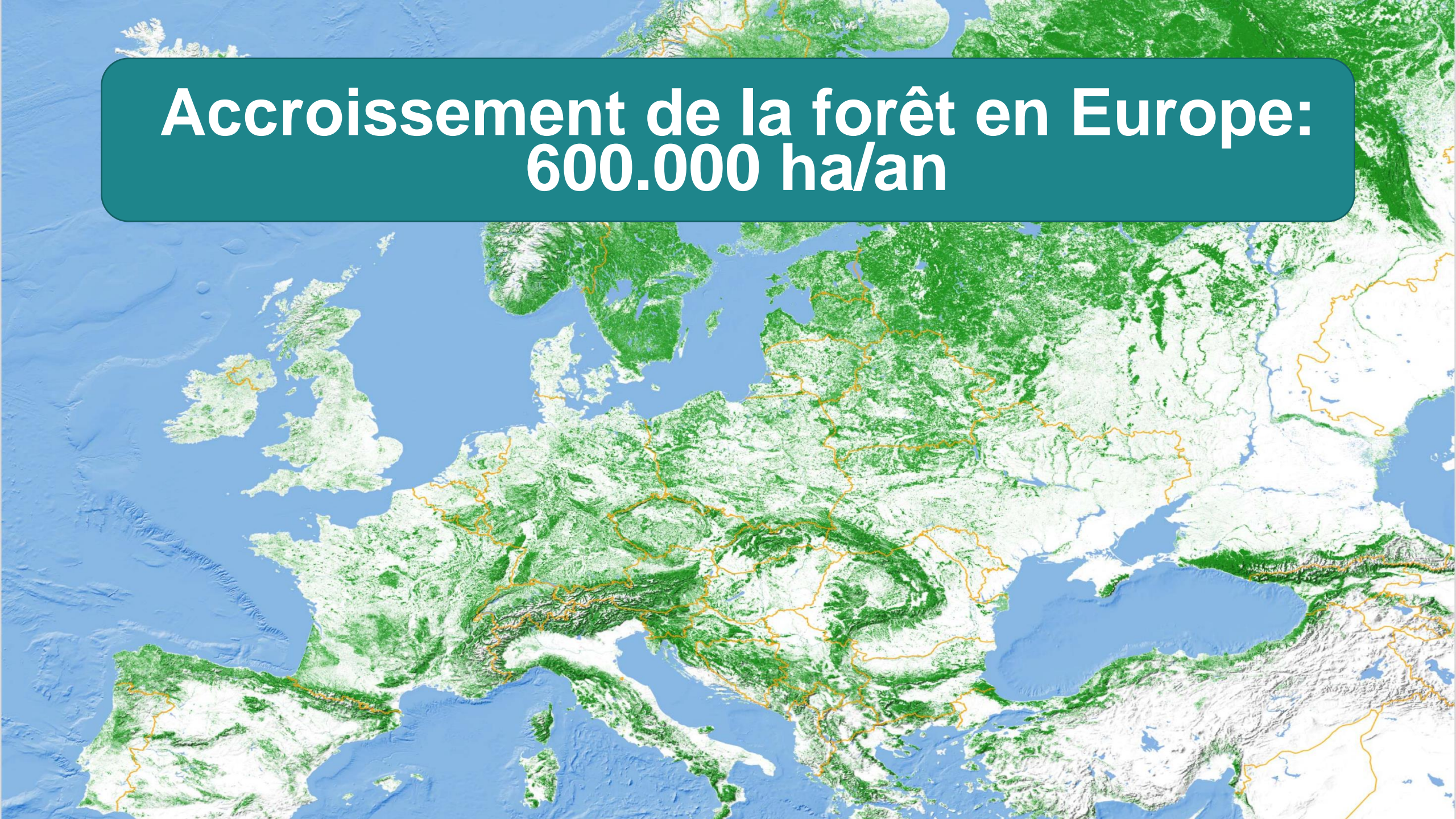
**Eiken-Beukenbossen
op zure bodems**

**Hêtraies-chênaies
acidophiles
atlantiques**





**Accroissement de la forêt en Europe:
600.000 ha/an**



Accumulation de bois mort
Accumulatie van dood hout



*Cerophytum
elateroides*



Cerophytum elateroides

*only EU Red listed
deadwood beetle in
the Benelux !*

*Only known from 1
single tree in Brussels
in last 5 years!*



*Can we have an
optimistic outlook ?*





***Merci pour votre
attention!***

***Bedankt voor uw
aandacht!***

***Thank you for your
attention!***

